

LCC Modelling System

B 00-11 Bundle: goods shed with office

Bundle contains:

- 1x LCC 00-00
- 1x LCC 00-01
- 1x LCC 00-02
- 2x LCC 00-09
- 2x LCC 00-24A
- 2x LCC 00-24B
- 1x LCC 03-18
- 2x LCC 04-02
- 2x LCC 04-03
- 4x LCC 04-06
- 1x LCC 04-08
- 1x LCC 04-09
- 2x LCC 04-10
- 5x LCC 04-11
- 3x LCC 04-12
- 1x LCC 04-13
- 2x LCC 04-18
- 1x LCC 04-24
- 1x LCC 04-25
- 1x LCC 04-26
- 1x LCC 04-27
- 2x LCC 04-28
- 2x LCC 04-29
- 2x LCC 04-30
- 1x LCC 04-31
- 1x LCC 04-32
- 1x LCC 04-33
- 1x LCC 04-34
- 1x LCC 04-35
- 1x LCC 04-36
- 1x LCC 04-37
- 1x LCC 04-38
- 4x LCC 04-49
- 3x LCC 04-50
- 1x LCC 04-51

This kit includes elements which can be used to assemble a goods shed with office.

Footprint:

Width: 137mm

Length: 184mm without office

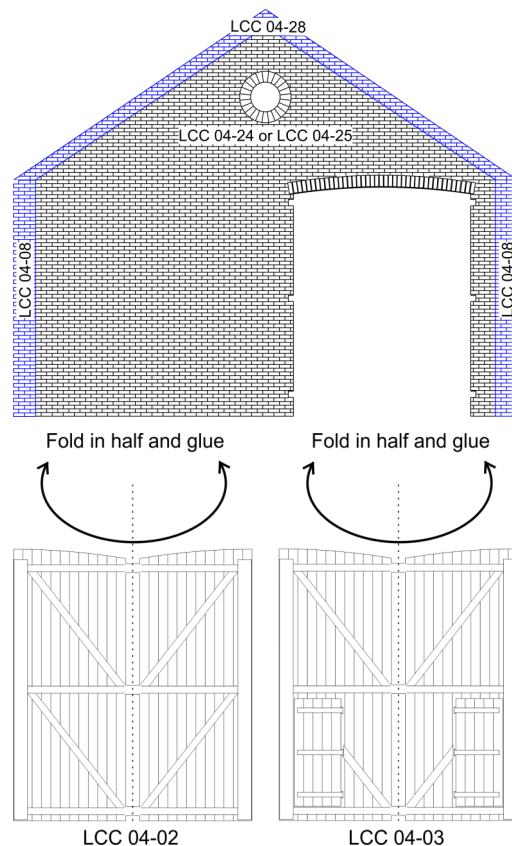
Length: 215mm with office on door elevation

For more instruction go to manual which you can download from our website www.lcut.co.uk

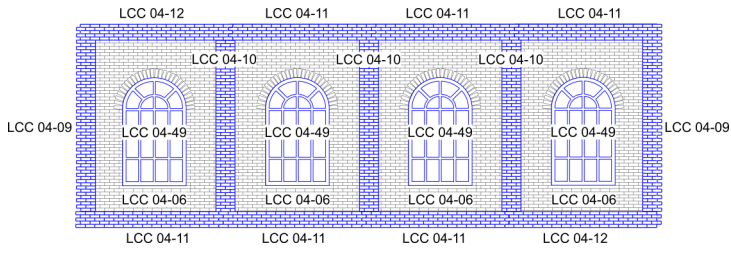
All drawings are not in scale.

LCC Modelling System is flexible and you can make easy modification. Please visit our website at www.lcut.co.uk to shop for additional LCC elements.

DOOR ELEVATIONS

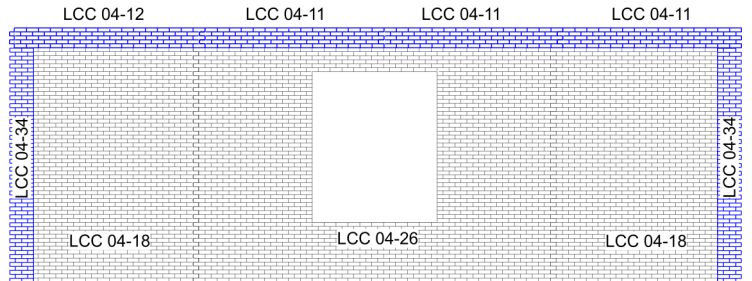
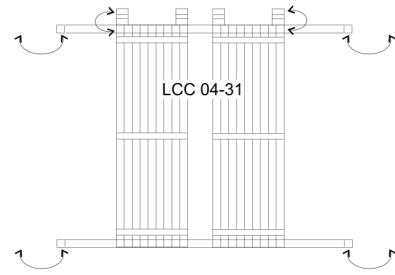


SIDE ELEVATION



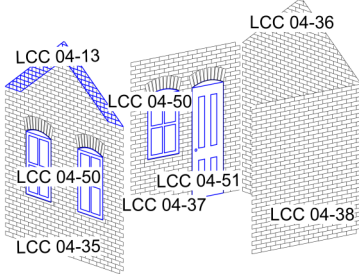
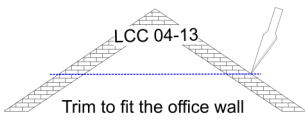
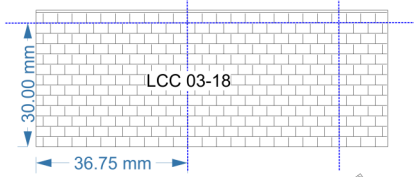
LOADING BAY ELEVATION

Fold strips inwards in along the line.



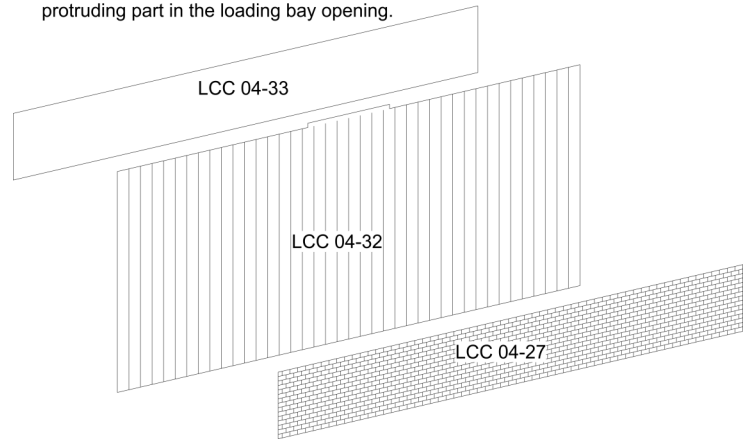
OFFICE

Split 03-18 to make 2 roof panels 30mm high and 36.75mm long. Glue to the top of the office and cover top with ridge tiles.



FLOOR

Glue floor with supports between walls with protruding part in the loading bay opening.



ROOF ASSEMBLY

Join two roof tiles panels and trim to 184mm x 85mm. Fold ridge tiles (00-09) and glue to the top of the roof.

